

# K6MMM Field Day 2024



Kerry K3RRY provided tower trailer & shelter for the CW Station.

K6MMM Field Day 2024  
© SLVARC, John AC6SL 2024-07-12

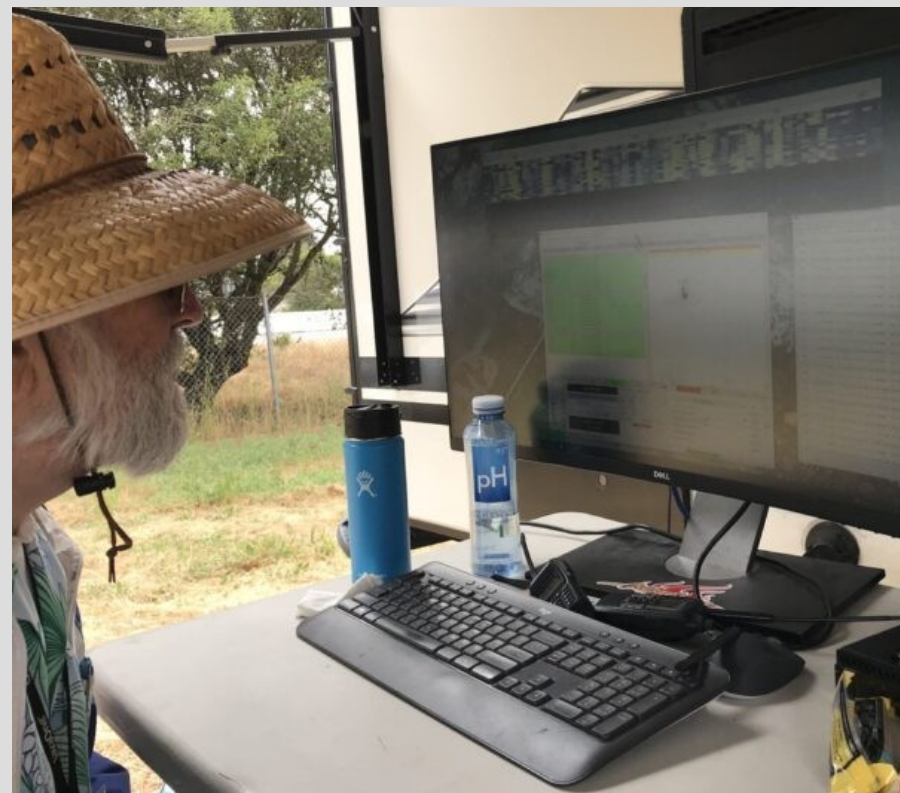


# Digital Station

Large screen space is needed for digital modes.

Craig N6SBN used multiple LiFePO4 batteries.

Jason N6KTO (no photo) was the night operator.  
Tom W6TJK made a few Qs.



# Digital Station



Buddi-Hex

Turning Radius 10 feet (3 meters)

Total Weight 9.50 lbs (4.3 kg)

Power Handling 1.5 KW

\$\$\$

4m Mastwerks™ Tripod and Mast System

Weight (complete system): 8.4 lbs (3.4 kilograms)

\$\$\$

80m, 40m, 20m Inverted-V

\$\$

If you are going to spend money on your ham radio station, it is best spent on antenna !



# HF Phone Station



Inverted-V Fan Dipole  
(best available photo?)

Rich WN6A & Lee KB6LEE.

Strong effort by 1<sup>st</sup> time Phone Station Captain Rich WN6A.

# VHF Phone Station



Inside the VHF Phone tent.



# VHF Phone Station



A popular hangout, at the crossroads, near the food.



# N6OTA Get-On-The-Air Station



John KJ6WKT coaching the GOTA station.

# N6OTA GOTA Field Day 2024

Operator	QSOs	Bonus Points
Jerry W6OJE John KJ6WKT	coach	100
AG	1	5
BAN	1	5
BC	1	5
MB	1	5
MZ	1	5
RN	1	5
SA	1	5
Keenan KO6BRZ	4	20



# Information Table



100 bonus points.

# CW 4-band Hexbeam



Rich W6RGC learned how to assemble the big hexbeam.



Hinge assembly had not been tried before.

As Red Green says,  
"This is only temporary, unless it works."



# CW Operators



Rich KE1B



John AC6SL

Transceiver, headset, N1MMplus, EcoFlow + generator.

CW is decoded “by ear”, not by computer!

Internet Spotting was used for 1<sup>st</sup> time.



# Civilian Emergency Response Team



Front-facing CERT information table.



Rear-facing VHF Winlink station shared the pop-up shade.



# VHF Winlink Station

Roberta AJ6KN worked hard to pass formal traffic via intermittent Winlink.

200 Bonus Points



# Lots of Visitors



Lloyd drove his tractor from Larkin Valley, to improve the road.

Good that he did, because there were lots of visitors.





# Scout Troop





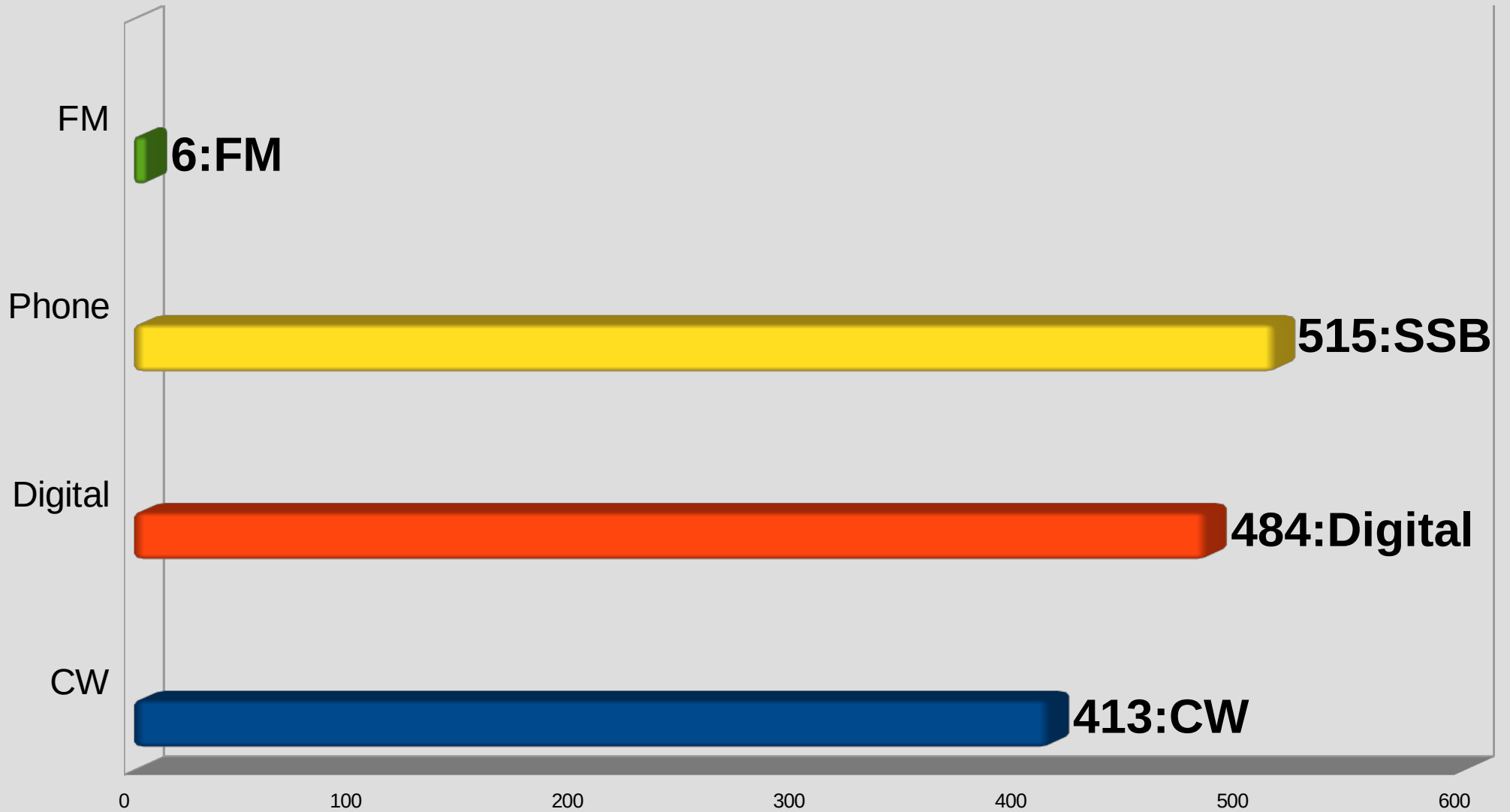
# KSBW TV News Coverage 100 Bonus Points



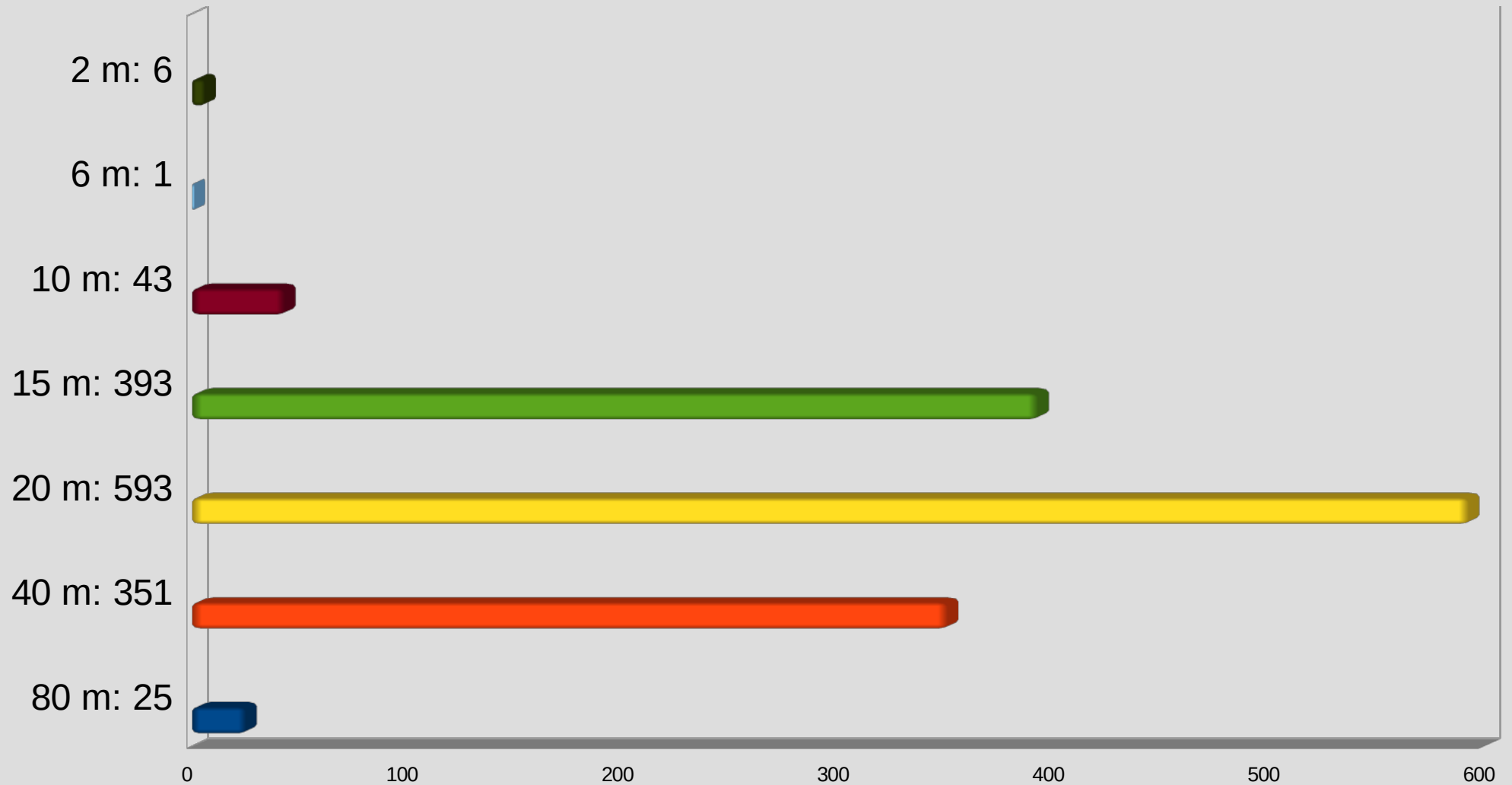
KSBW showed up with only 1 hour notice.  
<https://www.youtube.com/watch?v=orrafnUFejU>  
Roberta AJ6KN was interviewed re. ARES.



# 1418 QSO by mode

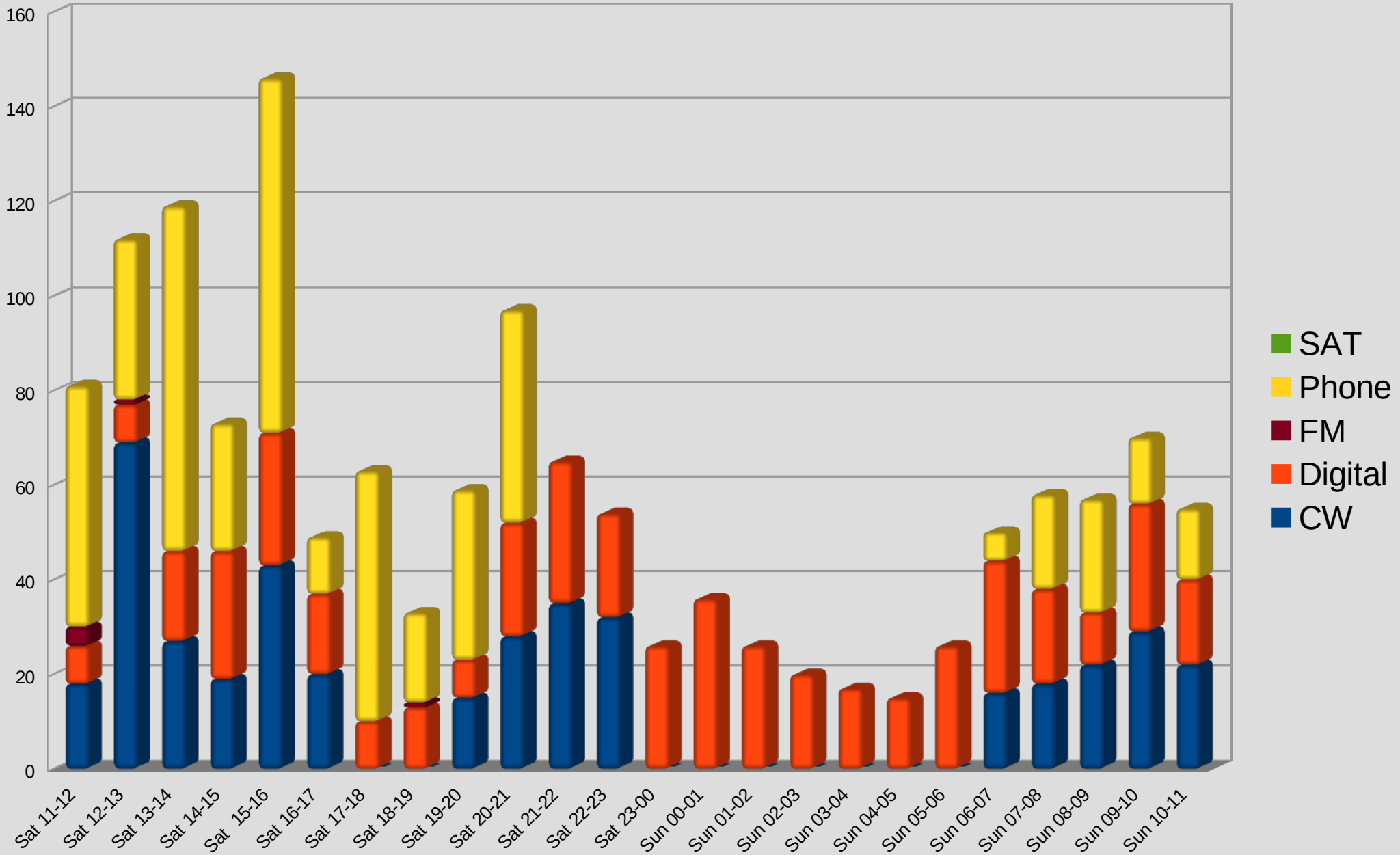


# 1418 QSO by band

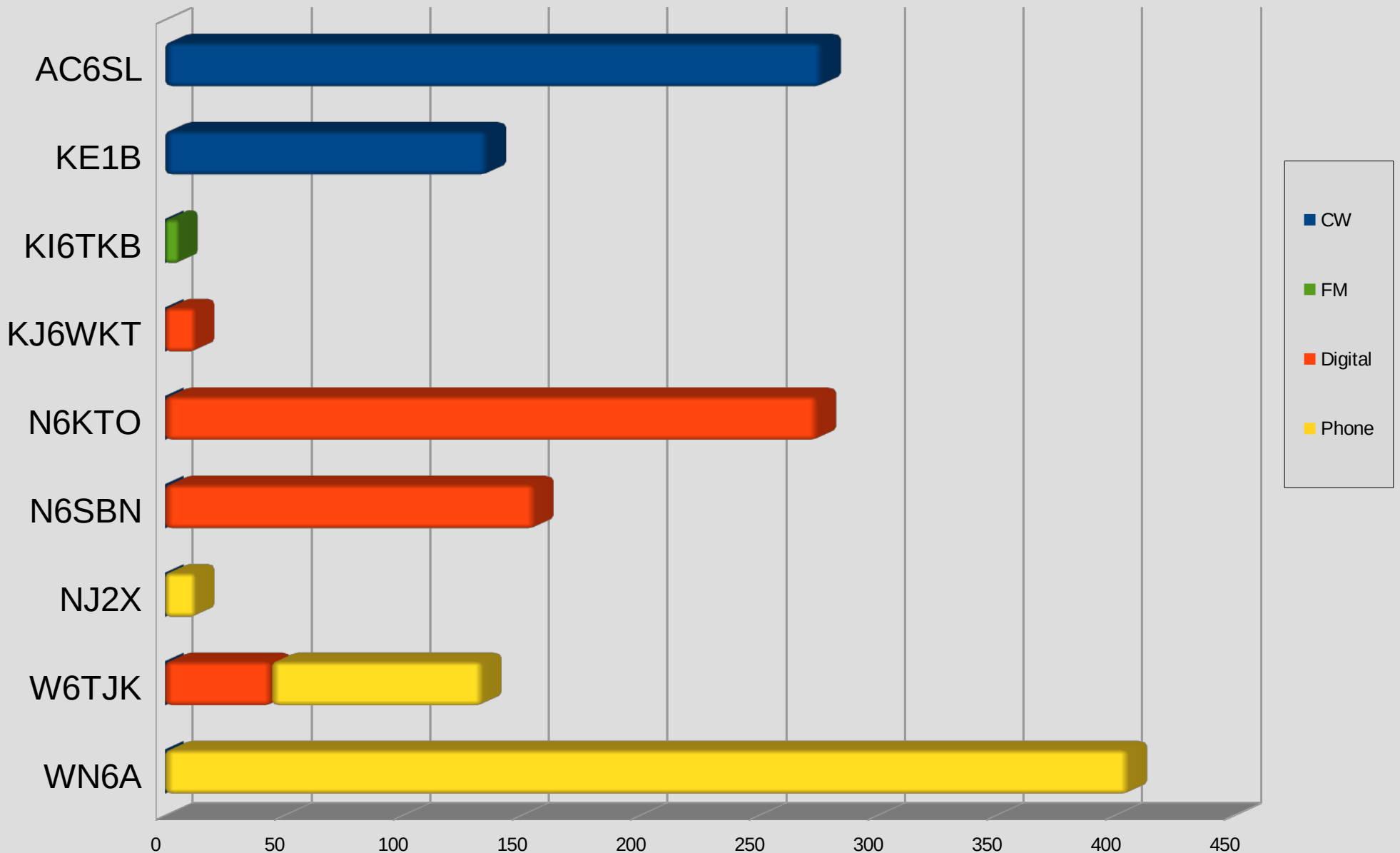




# 1418 QSO by hour



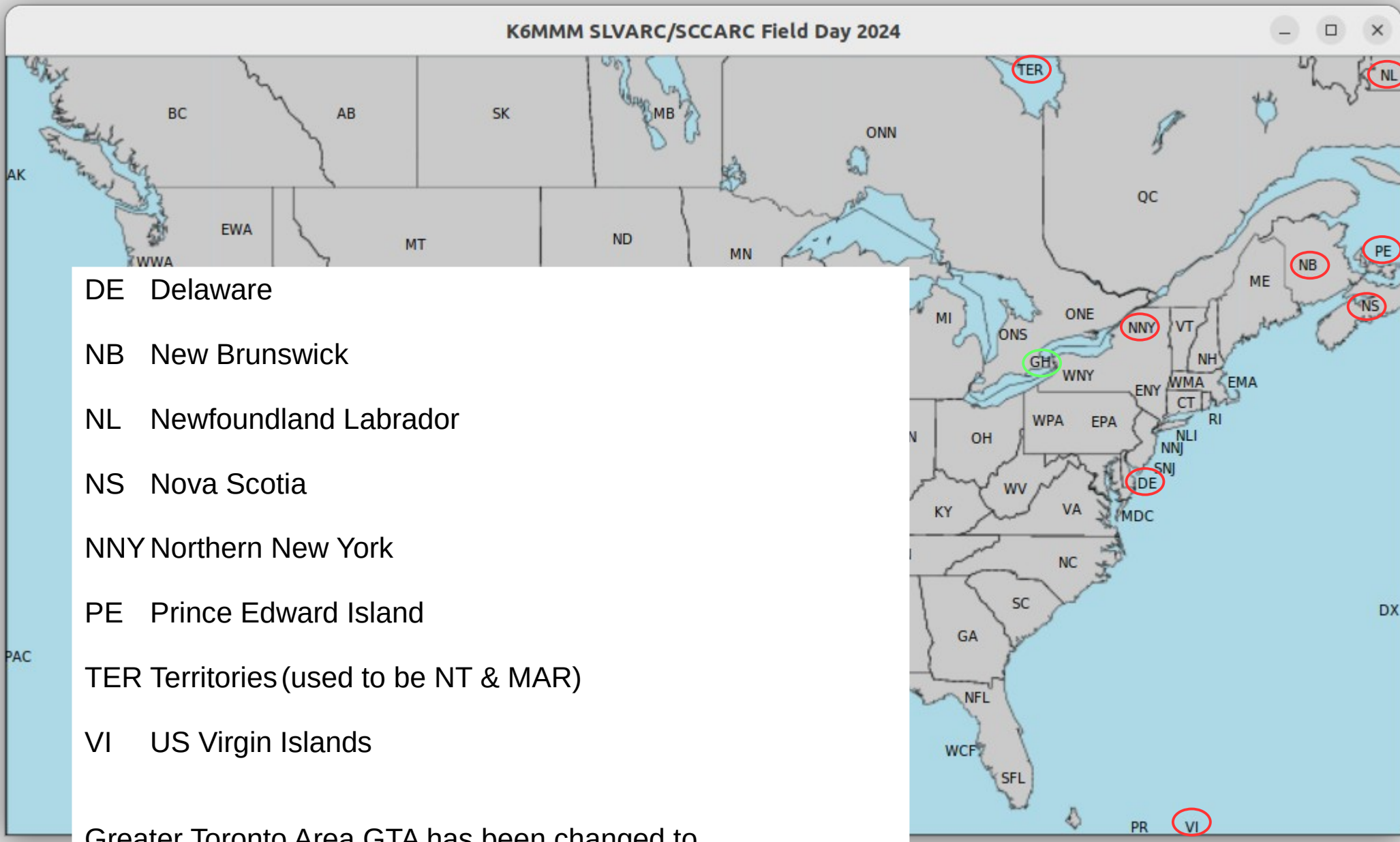
# 1418 QSO by OP/mode







# Sections Not Worked



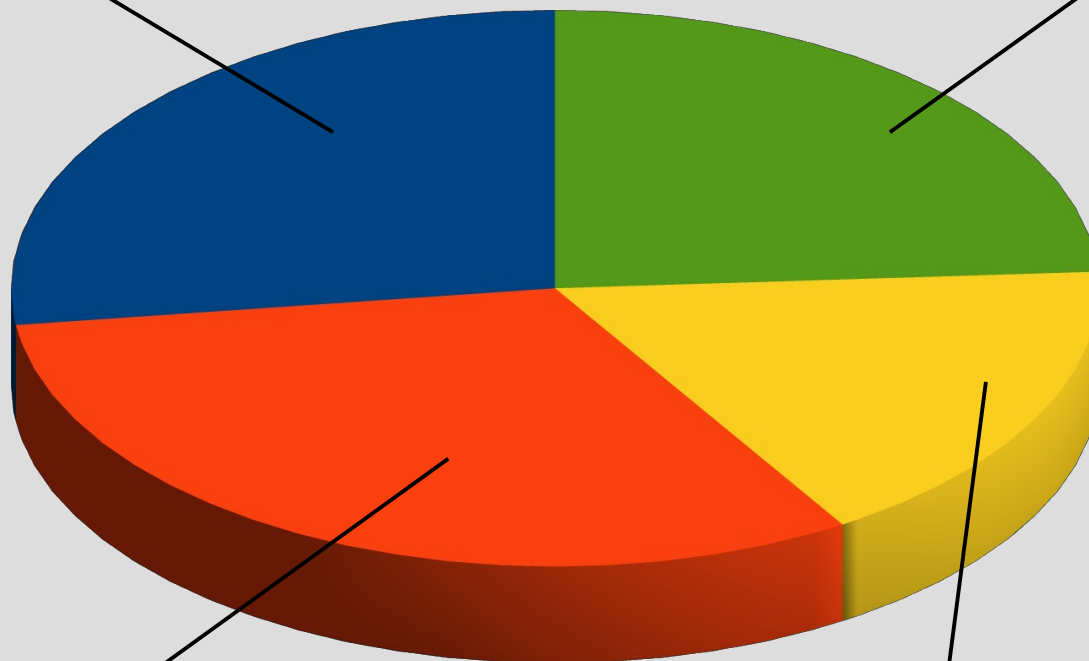


# K6MMM FD 2024 Score = 6095

Call Used: **K6MMM**    GOTA Station Call: **N6OTA**    ARRL/RAC Section: **SCV**    Class: **3A**

Participants: **85**    Power: **Generator + Battery + Solar**    Power Multiplier: **2X**

**413 CW x 2 x 2 = 1652**

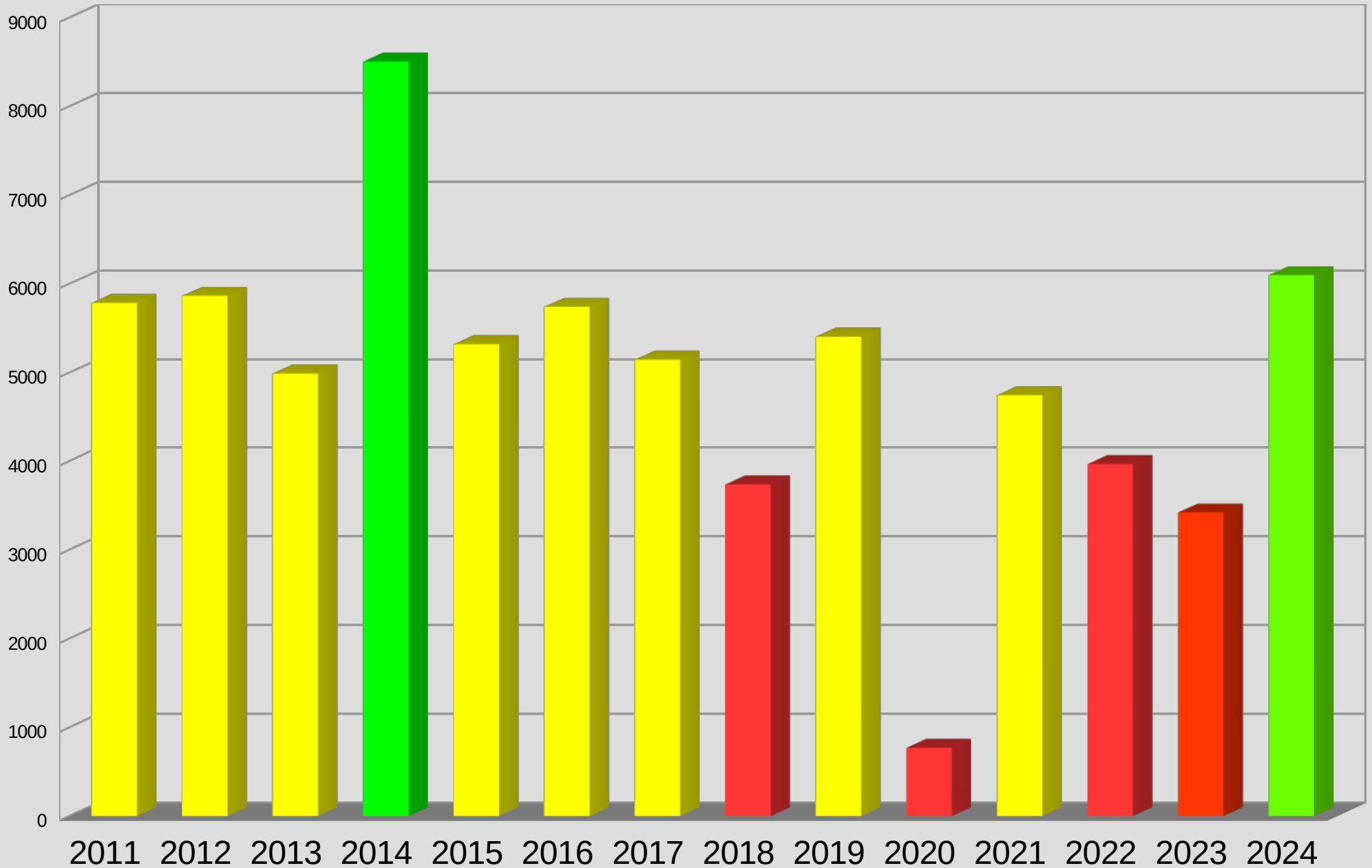


**484 Digital x 2 x 2 = 1936**

**521 Phone x 1 x 2 = 1042**

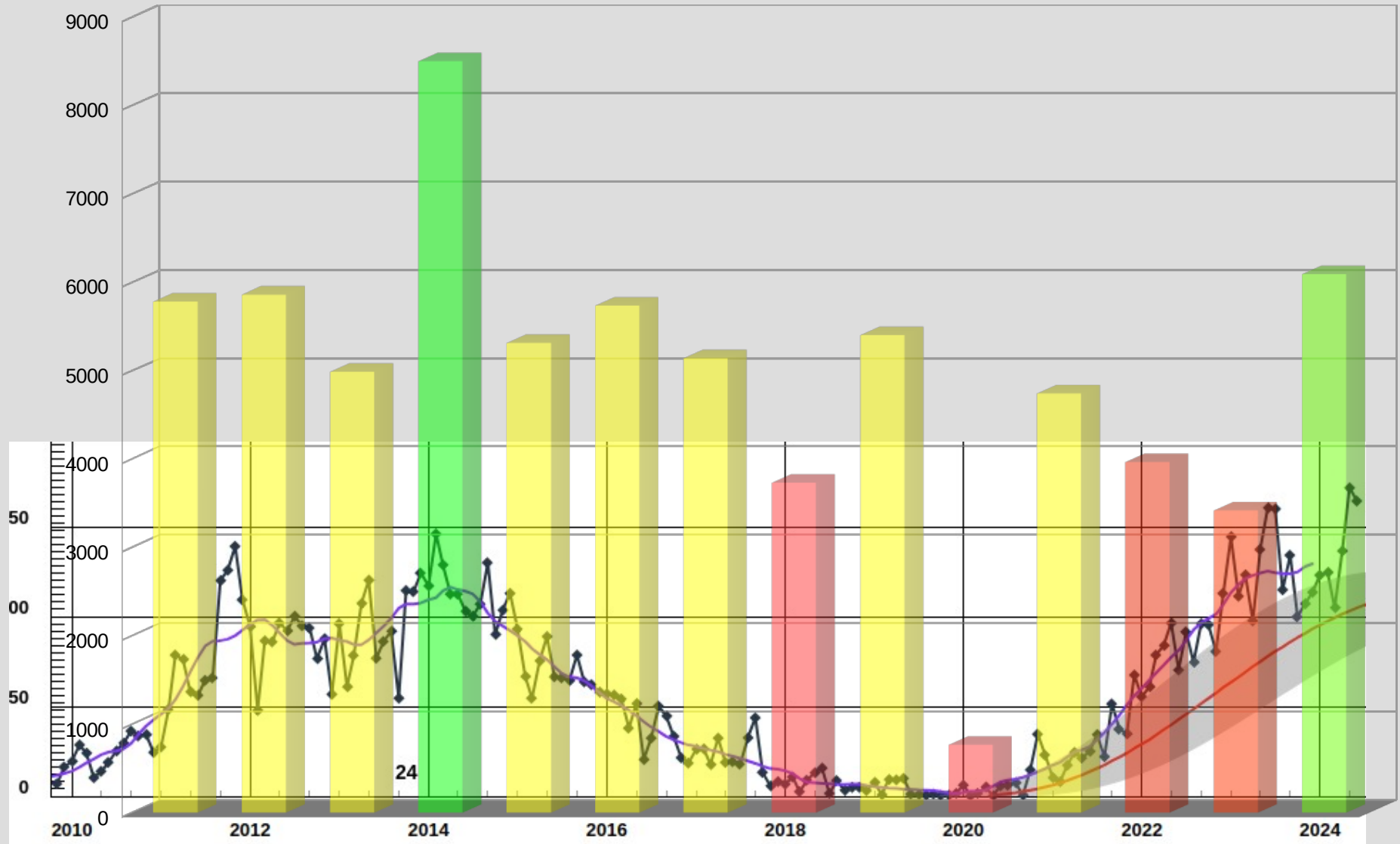
<b>Bonus Points</b>	<b>1465</b>
-----	-----
EmergPower	300
Media Publicity	100
Info Table	100
W1AW Msg	100
Formal Msg	100
Natural Power	100
Served Agency	100
10 x Messages	100
Social Media	100
Safety Officer	100
GOTA Coach	100
3 x Youth	60
GOTA Station	55
Web Submit	50

# FD Score by Year





# FD Score & Sunspot Cycle



# Field Day 2024

## Things that went well:

Weather was good.  
Edge of fog kept it from being too hot.

Site was large & fairly flat.  
Access was good (after roadwork).

Many visitors on Saturday.

Craig N6SBN provided griddle.  
Jerry W6OJE made  
bacon & pancake breakfast.  
Anonymous cooks made hamburgers  
for lunch on Saturday.

Freeway noise was not a problem.

## Things that did not go well:

Power problems:  
Without battery booster, < 100W out.

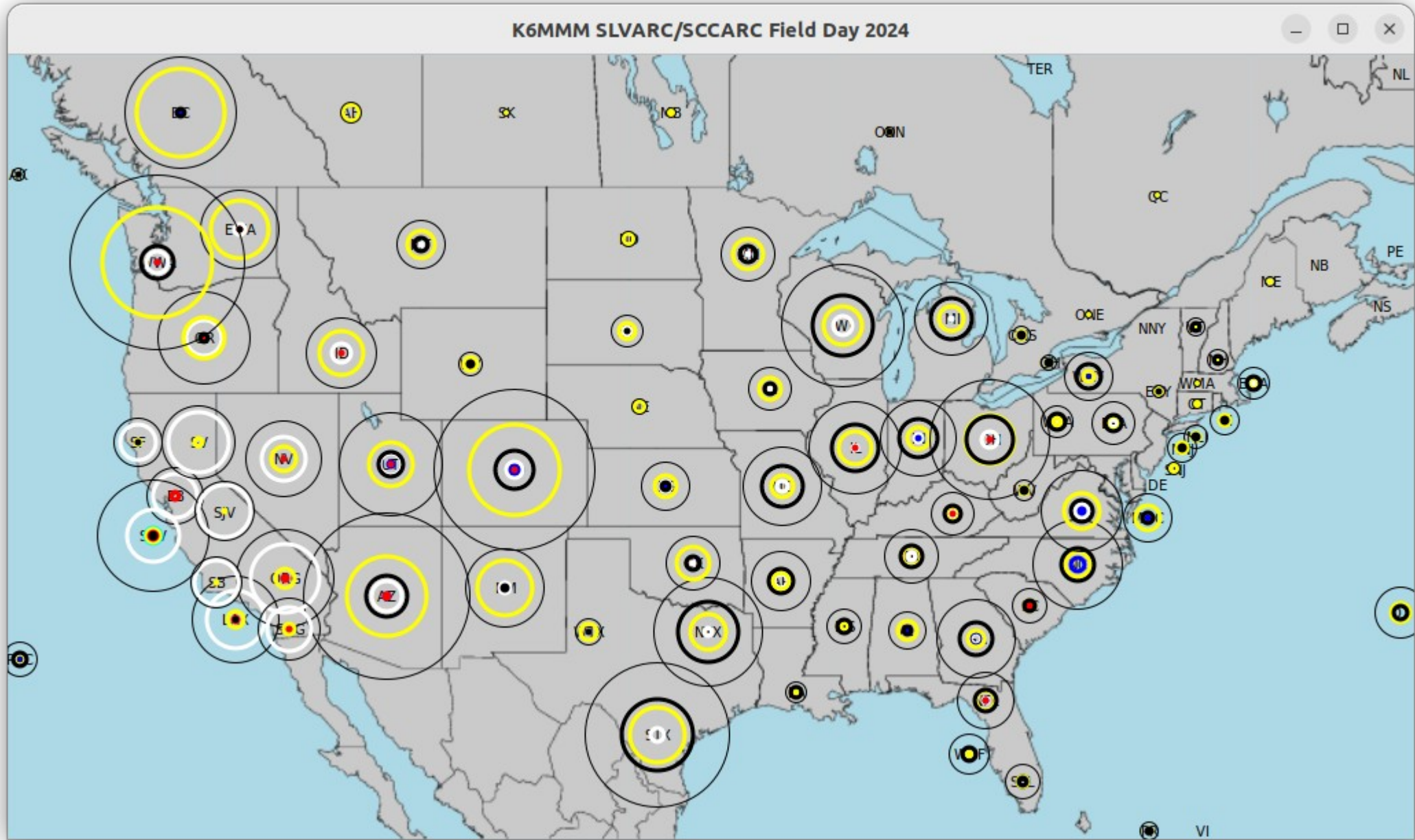
1KW generator was not strong enough for  
EcoFlow during transmit.

Road was a bit dusty.


Site not available next year.



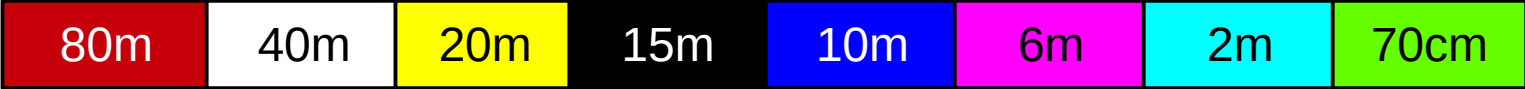
# K6MMM Field Day 2024



CW 

SSB 

Digital 



# Field Day 2025, R U READY?



Winter Field Day  
January 25th & 26th, 2025



ARRL Field Day – June 28, 2025

WFD has better hats!